

CHEMILINK
ZERO WASTE ENGINEERING

CHEMILINK™ SS-242

Non-Shrinkage High Performance Grout

Description

Chemilink™ SS-242 is a grey powder mix of special cements, graded aggregate and chemical additives which impart controlled expansion whilst in the plastic state. This material requires only the addition of water to produce a smooth free-flowing and non shrink grout. Chemilink™ SS-242 contains a maximum size aggregate of 0.5mm and is suitable for grouting thickness of between 5mm and 75mm. It is non-toxic, non-dusting and does not contain corrosive metallic additives.

Typical Uses

- All general purpose grouting;
- Precast and presented panels;
- Grouting in column bases, base infilling;
- Repairs to spalled and cracked concrete;
- Production of bridge bearing plinths;
- Joints between pre-cast panels and other joints;
- Grouting of machinery and turbines;
- Caulking of joints and pipes.

Technical Data

- Compressive Strength at 28 days: > 70.0 MPa
- Flow Consistency: 10 - 30 sec
- Expansion at 3 & 28 days: < 0.4%
- Shrinkage at 28 days: 0%
- Setting Time:
 - Initial Set: > 1hour
 - Final Set: < 10 hours

Preparation

i. Injection Grouting

Chemilink™ SS-242 is suitable for most injection grouting applications; all cables should be cleaned immediately prior to grouting and ducts formed with sheaths flushed with water, the excess water being removed.

ii. Under Plate Grouting

All surfaces should be free from laitance, oil, grease and any loosely adhering material. Prior to grouting the cleaned foundations should be thoroughly saturated with clean water and any excess water removed. All shuttering used should be grout tight to prevent losses and should have a minimum head height of 75mm at the point of entry. Grouting should be carried out from one side only with bleed holes suitably arranged to expel air and any surplus water. All vibrational disruption of the setting grout should be avoided.

iii. Ground Anchors and Bolting

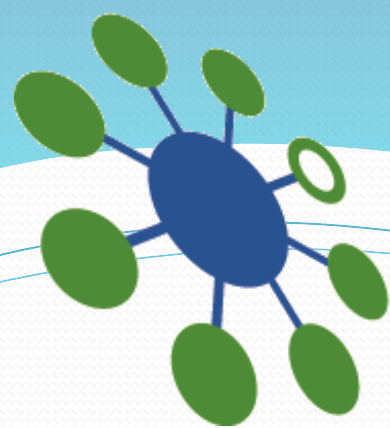
Chemilink™ SS-242 can be used for the grouting of ground anchors and foundation bolts. For the grouting of anchor and foundation bolts the holes should be generally 20 - 50mm greater in diameter than the bar, and must be clean; holes with smooth sides (e.g. cast or diamond drilled) must be suitably roughened to provide adequate mechanical key. The interior of the hole should be thoroughly saturated with clean water, and excess water removed before the grout is placed. It is normal practice to fill the hole with grout before the bolt is inserted, but if it is necessary to first position or suspend the bolt from the structure of machine to be fixed, then care must be taken in pumping the grout to avoid air locks etc., within the annulus.

iv. Other Applications

Other uses of Chemilink™ SS-242 include: forming joints between pre-cast units, bedding load bearing wall units, gap filling behind panels or permanent formwork, the reinstatement of existing structures.

Mixing

Either a powered paddle mixer or a static blade/revolving drum mixer is recommended for mixing, the batch size being adjusted to allow the grouting process to be continuous. Mixing should be carried out by adding the Chemilink™ SS-242 powder to the required volume of water in the mixer (with the mixer running) and mixing for approximately 3 minutes, or until a smooth homogeneous grout is produced. Optimum grout properties will be obtained using 5 litres of water per 25kg of Chemilink™ SS-242; this will yield 13.5 litres of mixed grout. Lower quantities of water will produce correspondingly thicker grouts and slightly reduced volume yields and higher 24 hour strengths, for example a ratio of 3.5 litres/25kg of Chemilink™ SS-242 will yield 13 litres of mixed grout.



CHEMILINK
ZERO WASTE ENGINEERING

CHEMILINK™ SS-242

Non-Shrinkage High Performance Grout

Placing

Chemilink™ SS-242 should be placed within 30 minutes. Use only a fresh mix after that time.

Package and Coverage

Package: 25kg/bag

Coverage: 13.5litres per 25kg bag

Curing

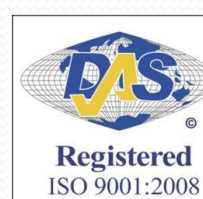
It is essential that all exposed areas of Chemilink™ SS-242 are properly cured for at least three days with wet hessian and polythene sheet.

Storage

Chemilink™ SS-242 has a shelf life of 12 months if stored in a cool, dry place in sealed bag

Total Solution Provider for Civil & Building Construction

Jan 2013



Cert No 80091



Cert No 64916/SG/A/90002



Our technical advice on the uses of our materials is given without obligation. The buyer is responsible for the application and processing of our products, and he is also liable for observing any third party rights. Technical data concerning our products are typical values.

CHEMILINK™ TECHNOLOGIES & PRODUCTS

20 Kranji Road Singapore 739462

Email: sales@chemilink.com

Website: www.chemilink.com

Tel: (65) 6252 2201

Fax: (65) 6252 7886