

# CHEMILINK™ SS-141

## High Performance Topping Compound

### — for Semi-Rigid Pavement

#### Description

Chemilink™ SS-141 is a high performance polymer modified cementitious material. This material requires only the addition of water to produce a smooth and highly workable mixture. Chemilink™ SS-141 develops high strength very rapidly and has good durability as well. Chemilink™ SS-141 is the result of extensive research work and practice of latest nano-technology.

#### Technical Data

Properties	Test Method	Chemilink™ SS-141
Flow value	ASTM C939 (Flow Cone Method)	12 ~ 28 Seconds
	JASS 15 M103	270 ~ 310 mm
Density	BS EN 12190	2100 ~ 2250 kg/m <sup>3</sup>
1-day Compressive Strength*	BS EN 12390-3	40 ~ 60 MPa
7-day Compressive Strength	BS EN 12390-3	70 ~ 90 MPa
28-day Compressive Strength	BS EN 12390-3	90 ~ 130 MPa
28-day Flexural Strength	BS EN 12190	6 ~ 10 MPa
Setting Time	EN 196 – 3	2~3 h, 3~6 h, 6~8 h

\*24 hours from initial setting

#### Advantages

- Easy application due to easy gauging with water
- High workability
- High early and long-term strength

#### Usages

- Topping grout for porous asphalt to form a semi-rigid pavement system

#### Application Procedure

##### Surface Preparation

For semi-rigid pavement, surface preparation is not required.

##### Mixing

Mixing Chemilink™ SS-141 powder with approx. 25~30% by weight of water or as advised by Chemilink principal. Mechanical mixing is essential. Mixing must go on for 3 - 7 minutes depending on the speed of the mixing equipment.

Mixing should be carried out continuously to ensure a continued and even supply of homogeneous and lump-free mortar.

##### Quality Check

Check the workability of the mortar before placing.

##### Spreading

The temperature of open graded asphalt concrete should not exceed 60°C at the time of spreading Chemilink™ SS-141. Chemilink™ SS-141 should be spread within 30 minutes when it's fresh. It can easily be spread with a spacer equipped trowel. We strongly recommend that the spreading should be done at night time if apply in tropical regions.

#### Package and Coverage

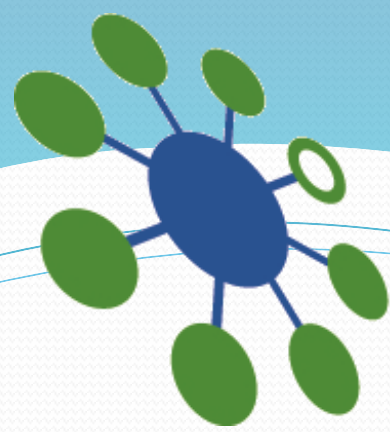
Package: 25kg/bag, 0.5ton/Jumbo bag or 1ton/Jumbo bag

Coverage: For semi-rigid system, at 50mm thickness, 25 kg/m<sup>2</sup> for asphalt concrete at porosity around 25%

#### Storage

Chemilink™ SS-141 has a shelf life of 6 months if stored in a cool, dry place in sealed bag.





## CHEMILINK™ SS-141

### High Performance Topping Compound

#### — for semi-rigid pavement

#### Appendix: Example of Chemilink™ SS-141 Application

##### 1. Properties of Finished Semi-Rigid Pavement (for reference only)

Properties	Test Method	Semi-Rigid Pavement
1-day Compressive Strength	BS EN 12390-3	5.0 ~ 8.0 MPa
8-day Compressive Strength		8.0 ~ 12.5 MPa
28-day Compressive Strength		8.0 ~ 15.0 MPa
Skid Resistance	SS 498	≥ 55 BPN
Flexural Strength	BS EN 12390-5	≥ 3.5 MPa

##### 2. Application Procedure



##### 3. Examples of Projects



Airport Parking Apron



Airport Runway Entry Section  
75mm x 2 layers



Airport Taxiway  
75mm



Expressway Entry Section



Turning Zone for Heavy Loading Vehicles



Parking Area for Heavy Loading Vehicles



Our technical advice on the uses of our materials is given without obligation. The buyer is responsible for the application and processing of our products, and he is also liable for observing any third party rights. Technical data concerning our products are typical values.

## CHEMILINK™ TECHNOLOGIES & PRODUCTS

20 Kranji Road Singapore 739462

Email: [sales@chemilink.com](mailto:sales@chemilink.com)

Website: [www.chemilink.com](http://www.chemilink.com)

Tel: (65) 6252 2201

Fax: (65) 6252 7886